

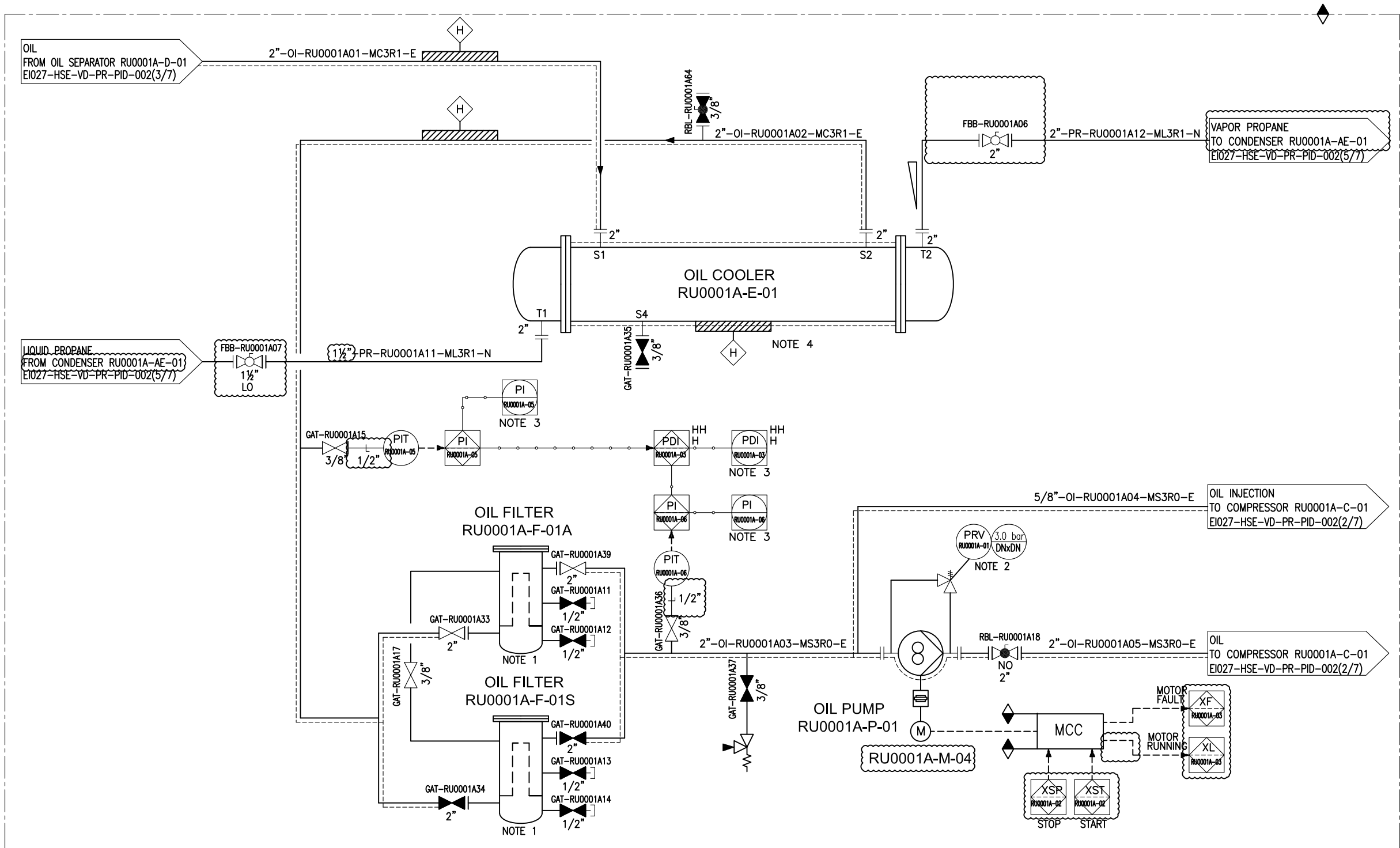
REFERENCE DRAWING		DWG NO.	REV.		
NOTES :					
1- OPENING DEGREE TO BE SET DURING COMMISSIONING AND LOGGED.					
2- SIGNALS ROUT TO DCS.					
3- MAINTAIN TEMPERATURE FOR ELECTRICAL INSULATIONS IS 30°C.					
LEGEND:					
<div>VENDOR</div> <div>CUSTOMER</div>					
HOLDE:					
EQUIPMENT LIST:					
KEY PLAN :					
01	AUG-2024	ISSUED FOR APPROVAL (IFA)	A.K	F.SH	A.M
00	JUL-2024	ISSUED FOR APPROVAL (IFA)	A.K	F.SH	A.M
REV.	ISSUE DATE	DESCRIPTION	PREPARED	CHECKED	APPROVED
CLIENT					
CONSULTING ENGINEER					
PROJECT:					
DRAWING TITLE:					
PROCESS & INSTRUMENTATION DIAGRAM (P&ID)-RU					
DRAWING NO.		REV.	SIZE	SCALE	SHEET
EI027-HSE-VD-PR-PID-002		01	A3	NTC	2 of 7

TAG NO.	RU0001A-E-01
SERVICE	OIL COOLER
DESIGN PRESS. (BARG)	S: 30, T:30
DESIGN TEMP. (°C)	S:5/100, T:-45/100
DESIGN DUTY (kW)	24.7
ID x L (mm)	139.7 x 2200
TYPE	AEH

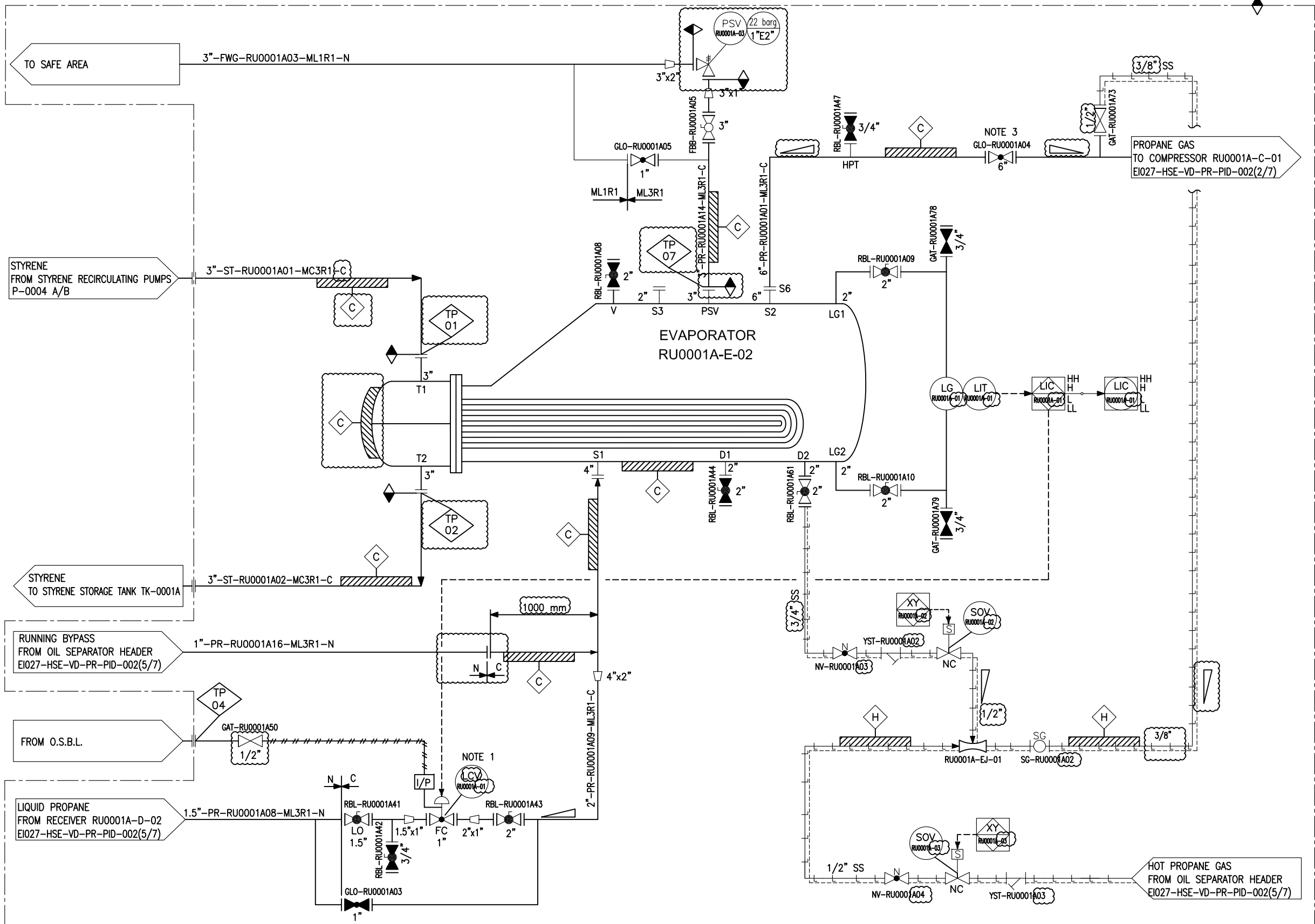
TAG NO.	RU0001A-P-01
SERVICE	OIL PUMP
TYPE	SCREW PUMP
DESIGN PRESS. (BARG)	26
DESIGN TEMP. (°C)	5 / 100
RATED POWER (kW)	2.5


TAG NO.	RU0001A-F-01A/S
SERVICE	OIL FILTER
DESIGN PRESS. (BARG)	23
DESIGN TEMP. (°C)	5/100
ID x L (mm)	MAYEKAWA

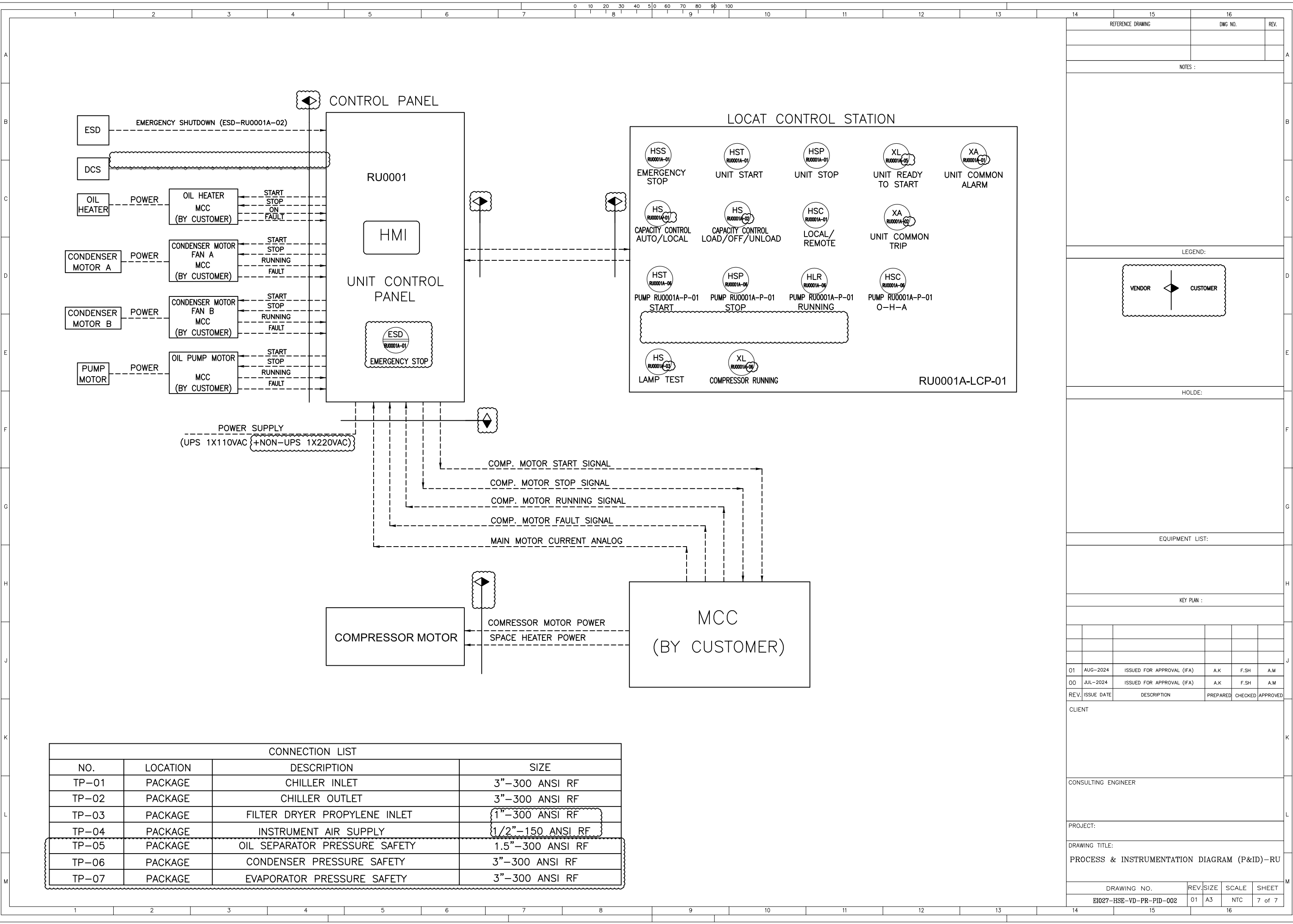
14	15	16			
REFERENCE DRAWING	DWG NO.	REV.			
NOTES :					
1- ONE OPERATING / ONE STAND-BY.					
2- DP=3 BAR.					
3- SIGNAL ROUT TO DCS.					
4- HEAT TRACING TO BE TURNED OFF DURING COMPRESSOR START.					
5- MAINTAIN TEMPERATURE FOR ELECTRICAL INSULATIONS IS 30°C.					
LEGEND:					
<div><div>VENDOR</div><div>CUSTOMER</div></div>					
HOLDE:					
EQUIPMENT LIST:					
KEY PLAN :					
01	AUG-2024	ISSUED FOR APPROVAL (IFA)	A.K	F.SH	A.M
00	JUL-2024	ISSUED FOR APPROVAL (IFA)	A.K	F.SH	A.M
REV.	ISSUE DATE	DESCRIPTION	PREPARED	CHECKED	APPROVED
CLIENT					
CONSULTING ENGINEER					
PROJECT:					
DRAWING TITLE:					
PROCESS & INSTRUMENTATION DIAGRAM (P&ID)-RU					
DRAWING NO.		REV.	SIZE	SCALE	SHEET
EI027-HSE-VD-PR-PID-002		01	A3	NTC	4 of 7



TAG NO.	RU0001A-E-02
SERVICE	EVAPORATOR
DESIGN PRESS. (barg)	S: 22.0+FV, T: 6.8+FV
DESIGN TEMP. (°C)	S: -45/120, T: 85
DESIGN DUTY (kW)	166.6
SHELL ID x TUBE L (mm)	600-925 x 2300
TEMA TYPE	BKU



14	15	16				
REFERENCE DRAWING	DWG NO.	REV.				
NOTES :						
1- TRAVEL DOWN BLOCK TO BE SET AND LOCKED AT MINIMUM OPENING DURING COMMISSIONING (2 ~ 5%).						
2- DELETED.						
3- AT STAND STILL CONDITION, VALVE NEEDS TO BE CLOSED COMPLETELY. DURING START-UP VALVE TO BE OPENED SMOOTHLY.						
4- MAINTAIN TEMPERATURE FOR ELECTRICAL INSULATIONS IS 30°C.						
LEGEND:						
<div><div>VENDOR</div><div></div><div>CUSTOMER</div></div>						
HOLDE:						
EQUIPMENT LIST:						
KEY PLAN :						
01	AUG-2024	ISSUED FOR APPROVAL (IFA)	A.K	F.SH	A.M	
00	JUL-2024	ISSUED FOR APPROVAL (IFA)	A.K	F.SH	A.M	
REV.	ISSUE DATE	DESCRIPTION	PREPARED	CHECKED	APPROVED	
CLIENT						
CONSULTING ENGINEER						
PROJECT:						
DRAWING TITLE:						
PROCESS & INSTRUMENTATION DIAGRAM (P&ID)-RU						
DRAWING NO.			REV.	SIZE	SCALE	SHEET
EI027-HSE-VD-PR-PID-002			01	A3	NTC	6 of 7



CONNECTION LIST			
NO.	LOCATION	DESCRIPTION	SIZE
TP-01	PACKAGE	CHILLER INLET	3"-300 ANSI RF
TP-02	PACKAGE	CHILLER OUTLET	3"-300 ANSI RF
TP-03	PACKAGE	FILTER DRYER PROPYLENE INLET	1"-300 ANSI RF
TP-04	PACKAGE	INSTRUMENT AIR SUPPLY	1/2"-150 ANSI RF
TP-05	PACKAGE	OIL SEPARATOR PRESSURE SAFETY	1.5"-300 ANSI RF
TP-06	PACKAGE	CONDENSER PRESSURE SAFETY	3"-300 ANSI RF
TP-07	PACKAGE	EVAPORATOR PRESSURE SAFETY	3"-300 ANSI RF

REFERENCE DRAWING		DWG NO.	REV.
NOTES :			
LEGEND:			
<div><div>VENDOR</div><div>CUSTOMER</div></div>			
HOLDE:			
EQUIPMENT LIST:			
KEY PLAN :			
01	AUG-2024	ISSUED FOR APPROVAL (IFA)	A.K F.SH A.M
00	JUL-2024	ISSUED FOR APPROVAL (IFA)	A.K F.SH A.M
REV.	ISSUE DATE	DESCRIPTION	PREPARED CHECKED APPROVED
CLIENT			
CONSULTING ENGINEER			
PROJECT:			
DRAWING TITLE:			
PROCESS & INSTRUMENTATION DIAGRAM (P&ID)-RU			
DRAWING NO.		REV.	SIZE
E1027-HSE-VD-PR-PID-002		01	A3
		SCALE	SHEET
		NTC	7 of 7